

**RPH108Hu01 10µg**

**Recombinant Sulfatase 1 (SULF1)**

**Organism Species: *Homo sapiens (Human)***

***Instruction manual***

FOR RESEARCH USE ONLY

NOT FOR USE IN CLINICAL DIAGNOSTIC PROCEDURES

---

13th Edition (Revised in Aug, 2023)

**[ PROPERTIES ]**

**Source:** Prokaryotic expression

**Host:** *E.coli*

**Residues:** Pro609~Gly871

**Tags:** Two N-terminal Tags, His-tag and SUMO-tag

**Subcellular Location:** Golgi apparatus

**Purity:** > 80%

**Traits:** Freeze-dried powder

**Buffer formulation:** PBS, pH7.4, containing 0.01% SKL, 5% Trehalose.

**Original Concentration:** 200µg/mL

**Applications:** Positive Control; Immunogen; SDS-PAGE; WB.

(May be suitable for use in other assays to be determined by the end user.)

**Predicted isoelectric point:** 8.3

**Predicted Molecular Mass:** 44.8kDa

**Accurate Molecular Mass:** 45&35kDa as determined by SDS-PAGE reducing conditions.

**[ USAGE ]**

Reconstitute in 10mM PBS (pH7.4) to a concentration of 0.1-1.0 mg/mL. Do not vortex.

**[ STORAGE AND STABILITY ]**

**Storage:** Avoid repeated freeze/thaw cycles.

Store at 2-8°C for one month.

Aliquot and store at -80°C for 12 months.

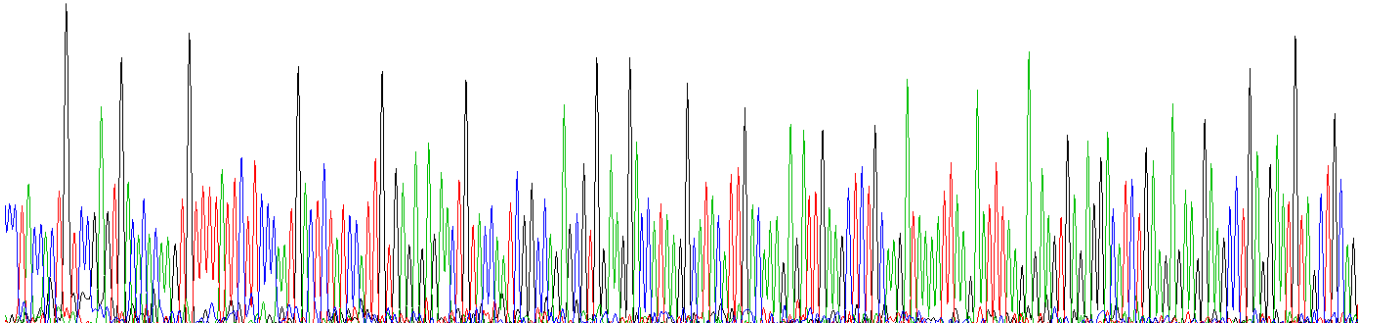
**Stability Test:** The thermal stability is described by the loss rate. The loss rate was determined by accelerated thermal degradation test, that is, incubate the protein at 37°C for 48h, and no obvious degradation and precipitation were observed. The loss rate is less than 5% within the expiration date under appropriate storage condition.

**[ SEQUENCE ]**

```
PT TVRVTHKCFI LPNDSIH CER ELYQSARAWK DHKAYIDKEI  
EALQDKIKNL REVRGHLKRR KPEECSCSKQ SYNKEKGVK KQEKLKSHLH  
PFKEAAQEV D SKLQLFKENN RRRKKERKEK RRQRKGEECS LPGLTCFTHD  
NNHWQTAPFW NLGSFCACTS SNNNTYWCLR TVNETHNFLF CEFATGFLEY  
FDMNTDPYQL TNTVHTVERG ILNQLHVQLM ELRSCQGYKQ CNPRPKNLDV  
GNKDGGSYDL HRGQLWDGWE G
```

**[ IDENTIFICATION ]**

TCCTAGCGCTGTCGGGTGACGACAGTGTATTCTTCGATGACTCTATCGATTGTGAGGAGGACTGTACCAATCGGCGAGGCTGGAGGACCA TAGGGCATCATTTGACAAAGGATTTGAGGCTCTGCAAGATAAAATTAAGAAATTTAAGGAGTGTGAGAGGICATCTGAGGAGAGGAGGCTGAGGATGTAGCTGAG  
P T T V R V T H K C F I L P N D S I H C E R E L Y Q S A R A W K D H K A Y I D K E I E A L Q D K I K N L R E V R G H L K R R K P E E C S C S



**Figure. Gene Sequencing (Extract)**

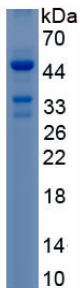


Figure. SDS-PAGE

**[ IMPORTANT NOTE ]**

The kit is designed for research use only, we will not be responsible for any issue if the kit was used in clinical diagnostic or any other procedures.