

RPH097Hu01 100µg

Recombinant Sulfite Oxidase (SUOX)

Organism Species: *Homo sapiens (Human)*

Instruction manual

FOR RESEARCH USE ONLY

NOT FOR USE IN CLINICAL DIAGNOSTIC PROCEDURES

13th Edition (Revised in Aug, 2023)

[PROPERTIES]

Source: Prokaryotic expression

Host: *E.coli*

Residues: Glu80~Pro545 (Accession # P51687)

Tags: N-terminal His Tag

Subcellular Location: Mitochondrion

Purity: > 97%

Traits: Freeze-dried powder

Buffer formulation: PBS, pH7.4, containing 0.01% SKL, 5% Trehalose.

Original Concentration: 200µg/mL

Applications: Positive Control; Immunogen; SDS-PAGE; WB.

(May be suitable for use in other assays to be determined by the end user.)

Predicted isoelectric point: 5.3

Predicted Molecular Mass: 57.3kDa

Accurate Molecular Mass: 70kDa as determined by SDS-PAGE reducing conditions.

Phenomenon explanation:

The possible reasons that the actual band size differs from the predicted are as follows:

1. Splice variants: Alternative splicing may create different sized proteins from the same gene.
2. Relative charge: The composition of amino acids may affect the charge of the protein.
3. Post-translational modification: Phosphorylation, glycosylation, methylation etc.
4. Post-translation cleavage: Many proteins are synthesized as pro-proteins, and then cleaved to give the active form.
5. Polymerization of the target protein: Dimerization, multimerization etc.

[USAGE]

Reconstitute in 10mM PBS (pH7.4) to a concentration of 0.1-1.0 mg/mL. Do not vortex.

[STORAGE AND STABILITY]

Storage: Avoid repeated freeze/thaw cycles.

Store at 2-8°C for one month.

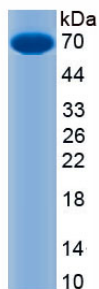
Aliquot and store at -80°C for 12 months.

Stability Test: The thermal stability is described by the loss rate. The loss rate was determined by accelerated thermal degradation test, that is, incubate the protein at 37°C for 48h, and no obvious degradation and precipitation were observed. The loss rate is less than 5% within the expiration date under appropriate storage condition.

[**SEQUENCE**]

```
E STHIYKKEEV SSHTSPETGI WVTLGSEVFD VTEFVDLHPG
GPSKMLAAG GPLEPFWALY AVHNQSHVRE LLAQYKIGEL NPEDKVAPTV ETSDPYADDP
VRHPALKVNS QRPFNAEPPP ELLTENYITP NPIFFTRNHL PVPNLDPDTPY RLHVVGAPGG
QSLSLSLDDL HNFPRYEITV TLQCAGNRRS EMTQVKEVKG LEWRTGAIST ARWAGARLCD
VLAQAGHQLC ETEAHVCFEG LDSDPTGTAY GASIPLARAM DPEAEVLLAY EMNGQPLPRD
HGFPVRVVVP GVVGARHVKW LGRVSVQPEE SYSHWQRRDY KGFSPSVDWE TVDFDSAPSI
QELPVQSAIT EPRDGETVES GEVTIKGYAW SGGGRAVIRV DVSLDGGLTW QVAKLDGEEQ
RPRKAWAWRL WQLKAPVPAG QKELNIVCKA VDDGYNVQPD TVAPIWNLRG VLSNAWHRVH
VYVSP
```

[**IDENTIFICATION**]



[**IMPORTANT NOTE**]

The kit is designed for research use only, we will not be responsible for any issue if the kit was used in clinical diagnostic or any other procedures.