

RPC241Mu01 10 μ g
Recombinant Telomerase Reverse Transcriptase (TERT)
Organism Species: *Mus musculus* (Mouse)
Instruction manual

FOR RESEARCH USE ONLY
NOT FOR USE IN CLINICAL DIAGNOSTIC PROCEDURES

13th Edition (Revised in Aug, 2023)

[PROPERTIES]

Source: Prokaryotic expression

Host: *E.coli*

Residues: Gln642~Lys974

Tags: N-terminal His and GST Tag

Subcellular Location: Nucleus, Cytoplasm, Chromosome

Purity: > 80%

Traits: Freeze-dried powder

Buffer formulation: 20mM Tris, 150mM NaCl, pH8.0, containing 0.01% skl, 5%Trehalose.

Original Concentration: 120µg/mL

Applications: Positive Control; Immunogen; SDS-PAGE; WB.

(May be suitable for use in other assays to be determined by the end user.)

Predicted isoelectric point: 7.1

Predicted Molecular Mass: 67.4kDa

Accurate Molecular Mass: 60kDa as determined by SDS-PAGE reducing conditions.

Phenomenon explanation:

The possible reasons that the actual band size differs from the predicted are as follows:

1. Splice variants: Alternative splicing may create different sized proteins from the same gene.
2. Relative charge: The composition of amino acids may affects the charge of the protein.
3. Post-translational modification: Phosphorylation, glycosylation, methylation etc.
4. Post-translation cleavage: Many proteins are synthesized as pro-proteins, and then cleaved to give the active form.
5. Polymerization of the target protein: Dimerization, multimerization etc.

[USAGE]

Reconstitute in ddH₂O to a concentration of 0.1-1.0 mg/mL. Do not vortex.

[STORAGE AND STABILITY]

Storage: Avoid repeated freeze/thaw cycles.

Store at 2-8°C for one month.

Aliquot and store at -80°C for 12 months.

Stability Test: The thermal stability is described by the loss rate. The loss rate was determined by accelerated thermal degradation test, that is, incubate the protein at 37°C for 48h, and no obvious degradation and precipitation were observed. The loss rate is less than 5% within the expiration date under appropriate storage condition.

[SEQUENCE]

				QHFTQRLKT
LFSMLNYERT	KPHPLMGSSV	LGMNDIYRTW	RAFVLRVRAL	DQTPRMYFVK
ADVTGAYDAI	PQGKLVVVA	NMIRHSESTY	CIRQYAVVRR	DSQGQVHKSF
RRQVTTLSDL	QPYMGQFLKH	LQSDASALR	NSVIEQSIG	MNESSSLFD
FFLHFLRHSV	VKIGDRCYTQ	CQGIPQGSSL	STLLCSLFCG	DMENKLFAEV
QRDGLLLRFV	DDFLLVTPHL	DQAKTFLSTL	VHGVPEYGCM	INLQKTVVNF
PVEPGTLGGA	APYQLPAHCL	FPWCGLLLDT	QTLEVFCDYS	GQAQTSIKTS
LTFQSVFKAG	KTMRNKLLSV	LRLK		

[IDENTIFICATION]

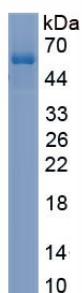


Figure. SDS-PAGE

[IMPORTANT NOTE]

The kit is designed for research use only, we will not be responsible for any issue if the kit was used in clinical diagnostic or any other procedures.