

**RPC241Ra01 50µg**  
**Recombinant Telomerase Reverse Transcriptase (TERT)**  
**Organism Species: *Rattus norvegicus* (Rat)**  
***Instruction manual***

FOR RESEARCH USE ONLY  
NOT FOR USE IN CLINICAL DIAGNOSTIC PROCEDURES

---

12th Edition (Revised in Aug, 2016)

**[ PROPERTIES ]**

**Source:** Prokaryotic expression

**Host:** *E.coli*

**Residues:** Thr673~His976

**Tags:** N-terminal His Tag

**Subcellular Location:** Nucleus, Cytoplasm, Chromosome

**Purity:** > 95%

**Traits:** Freeze-dried powder

**Buffer formulation:** 20mM Tris, 150mM NaCl, pH8.0, containing 0.01% skl, 5%Trehalose.

**Original Concentration:** 50µg/mL

**Applications:** Positive Control; Immunogen; SDS-PAGE; WB.

(May be suitable for use in other assays to be determined by the end user.)

**Predicted isoelectric point:** 8.9

**Predicted Molecular Mass:** 35.8kDa

**Accurate Molecular Mass:** 35kDa as determined by SDS-PAGE reducing conditions.

**[ USAGE ]**

Reconstitute in ddH<sub>2</sub>O to a concentration of 0.1-0.5 mg/mL. Do not vortex.

**[ STORAGE AND STABILITY ]**

**Storage:** Avoid repeated freeze/thaw cycles.

Store at 2-8°C for one month.

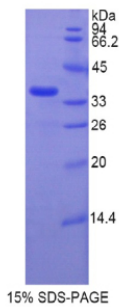
Aliquot and store at -80°C for 12 months.

**Stability Test:** The thermal stability is described by the loss rate. The loss rate was determined by accelerated thermal degradation test, that is, incubate the protein at 37°C for 48h, and no obvious degradation and precipitation were observed. The loss rate is less than 5% within the expiration date under appropriate storage condition.

**[ SEQUENCE ]**

TSDSYRIW RTFVLRVRAL DQTPRMYFVK  
ADVTGAYDAI PQDKLVEIVA NIIRRESMY CIRQYAVVQK DSQQQVHKSF  
RRQVSTLSDL QPYMGQFTKH LQSDASALR NSVIEQSI MNETGSSLLH  
FFLRFVRHSV VKIDGRFYVQ CQGIPQGSSL STLLCSLCFG DMENKLFAEV  
QQDGLLLRFV DDFLLVTPHL AHAKAFLSTL VHGVPEYGCM INLQKTVVNF  
PVETGALGGA APHQLPAHCL FPWCGLLLDT RTLEVFCDYS GYGRTSIKMS  
LTFQGVSRAG KTMRYKLLSV LRLKCH

**[ IDENTIFICATION ]**



**[ IMPORTANT NOTE ]**

The kit is designed for research use only, we will not be responsible for any issue if the kit was used in clinical diagnostic or any other procedures.