

RPC810Hu01 50µg

Recombinant Three Prime Repair Exonuclease 1 (TREX1)

Organism Species: *Homo sapiens (Human)*

Instruction manual

FOR RESEARCH USE ONLY

NOT FOR USE IN CLINICAL DIAGNOSTIC PROCEDURES

13th Edition (Revised in Aug, 2023)

[PROPERTIES]

Source: Prokaryotic expression

Host: *E.coli*

Residues: Arg6~Glu369

Tags: N-terminal His Tag

Subcellular Location: Nucleus, Cytoplasm, Endoplasmic reticulum lumen

Purity: > 95%

Traits: Freeze-dried powder

Buffer formulation: PBS, pH7.4, containing 0.01% SKL, 5% Trehalose .

Original Concentration: 120µg/mL

Applications: Positive Control; Immunogen; SDS-PAGE; WB.

(May be suitable for use in other assays to be determined by the end user.)

Predicted isoelectric point: 8.8

Predicted Molecular Mass: 42.2kDa

Accurate Molecular Mass: 44kDa as determined by SDS-PAGE reducing conditions.

[USAGE]

Reconstitute in 10mM PBS (pH7.4) to a concentration of 0.1-1.0 mg/mL. Do not vortex.

[STORAGE AND STABILITY]

Storage: Avoid repeated freeze/thaw cycles.

Store at 2-8°C for one month.

Aliquot and store at -80°C for 12 months.

Stability Test: The thermal stability is described by the loss rate. The loss rate was determined by accelerated thermal degradation test, that is, incubate the protein at 37°C for 48h, and no obvious degradation and precipitation were observed. The loss rate is less than 5% within the expiration date under appropriate storage condition.

[SEQUENCE]

```

RRQGR IVQGRPEMCF CPPPTLPPL RILTLGHTP TPCSSPGSAA
GTYPMTGSQA LPPGPMQLI FFDMEATGLP FSQPKVTELC LLAVHRCAL
SPPTSQGPPP TVPPPPRVVD KLSLCVAPGK ACSPAASEIT GLSTAVLAAH
GRQCFDDNLA NLLLAFLRRQ PQPWCLVAHN GDRYDFPLLQ AELAMLGLTS
ALDGAFVDS ITALKALERA SSPSEHGPRK SYSLGSIYTR LYGQSPDSDH
TAEGDVLALL SICQWRPQAL LRWVDAHARP FGTIRPMYGV TASARTKPRP
SAVTTTAHLA TTRNTSPSLG ESRGTKDLPP VKDPGALSRE GLLAPLGLLA
ILTLAVATLY GLSLATPGE
    
```

[IDENTIFICATION]

180 190 200 210 220 230 240 250 260 270 280 290 300 310 320 330 340 350
 XAATTCGAGACAGGGCAGGATTGTGCAAGGAAAGGCCTGAGATGTGCTTCTGCCACCCCTACCCACTCCCTCCCTTGGATCTTAACTGGGCACTCAGACACCCACCCATGCTCCTCTCCAGGCTCAGCAGCAGGTAGCGTACCCAACCATGGGCTCGCAGGCCCTGCCCCGGG

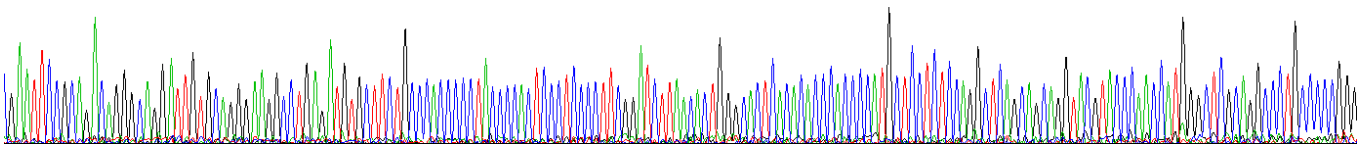


Figure . Gene Sequencing (extract)

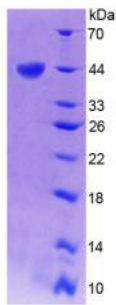


Figure. SDS-PAGE

[IMPORTANT NOTE]

The kit is designed for research use only, we will not be responsible for any issue if the kit was used in clinical diagnostic or any other procedures.