

RPA611Ra04 200µg
Recombinant Thrombospondin 1 (THBS1)
Organism Species: *Rattus norvegicus* (Rat)
Instruction manual

FOR RESEARCH USE ONLY
NOT FOR USE IN CLINICAL DIAGNOSTIC PROCEDURES

13th Edition (Revised in Aug, 2023)

[PROPERTIES]

Source: Prokaryotic expression

Host: *E.coli*

Residues: Gly511~Ser670

Tags: N-terminal His Tag

Subcellular Location: Secreted

Purity: > 97%

Traits: Freeze-dried powder

Buffer formulation: 20mM Tris, 150mM NaCl, pH8.0, containing 0.01% skl, 5%Trehalose.

Original Concentration: 150µg/mL

Applications: Positive Control; Immunogen; SDS-PAGE; WB.

(May be suitable for use in other assays to be determined by the end user.)

Predicted isoelectric point: 7.6

Predicted Molecular Mass: 18.6kDa

Accurate Molecular Mass: 16/18/20kDa as determined by SDS-PAGE reducing conditions.

[USAGE]

Reconstitute in 20mM Tris, 150mM NaCl (pH8.0) to a concentration of 0.1-1.0 mg/mL. Do not vortex.

[STORAGE AND STABILITY]

Storage: Avoid repeated freeze/thaw cycles.

Store at 2-8°C for one month.

Aliquot and store at -80°C for 12 months.

Stability Test: The thermal stability is described by the loss rate. The loss rate was determined by accelerated thermal degradation test, that is, incubate the protein at 37°C for 48h, and no obvious degradation and precipitation were observed. The loss rate is less than 5% within the expiration date under appropriate storage condition.

[SEQUENCE]

GVQRRSRLCN NPTPQFGGKD CVGDVTENQV CNKQDCPIDG
 CLSNPCFAGA KCTSYPDGSW KCGACPPGYS GNGIQCKDVD ECKEVPDACF
 NHNGEHRCKN TDPGYNCLPC PPRFTGSQPF GRGVEHAMAN KQVCKPRNPC
 TDGTHDCNKN AKCNYLGHYS

[IDENTIFICATION]

ATG AAT TCG GAG TAC AG AGA AG TAC CGC AC TC TGCA ACA ACC CAC ACC CAG TTG GAG GCAA GAC TG TG TTGG TG ATG TG AC GG AAA TCA AG TTG CAA CAAG CAGG AC TG TCG ATTG ATGG ATG CCTG TCCA TCC TGC TTG C TGG TG CCA G TG TAC GAG C TAT

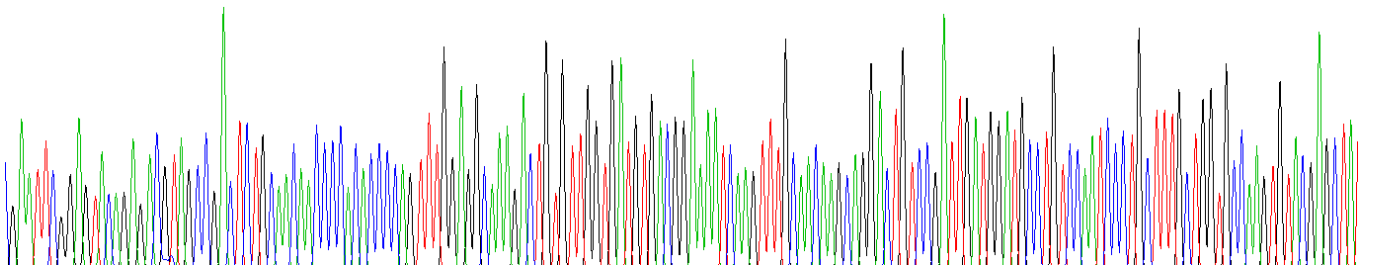


Figure . Gene Sequencing (extract)

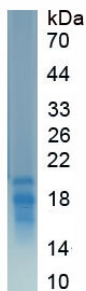


Figure. SDS-PAGE

[IMPORTANT NOTE]

The kit is designed for research use only, we will not be responsible for any issue if the kit was used in clinical diagnostic or any other procedures.