

**RPA355Ra01 10µg**

**Recombinant Thyroglobulin (TG)**

**Organism Species: *Rattus norvegicus* (Rat)**

***Instruction manual***

FOR IN VITRO USE AND RESEARCH USE ONLY  
NOT FOR USE IN CLINICAL DIAGNOSTIC PROCEDURES

---

12th Edition (Revised in Aug, 2016)

**[ PROPERTIES ]**

**Source:** Prokaryotic expression

**Host:** *E.coli*

**Residues:** Cys1150~Cys1509

**Tags:** N-terminal His Tag

**Subcellular Location:** Secreted

**Purity:** > 97%

**Traits:** Freeze-dried powder

**Buffer formulation:** 20mM Tris, 150mM NaCl, pH8.0, containing 1mM EDTA, 1mM DTT, 0.01% SKL, 5% Trehalose and Proclin300.

**Original Concentration:** 200µg/mL

**Applications:** Positive Control; Immunogen; SDS-PAGE; WB.

(May be suitable for use in other assays to be determined by the end user.)

**Predicted isoelectric point:** 6.5

**Predicted Molecular Mass:** 43.3kDa

**Accurate Molecular Mass:** 43kDa as determined by SDS-PAGE reducing conditions.

**[ USAGE ]**

Reconstitute in 20mM Tris, 150mM NaCl (pH8.0) to a concentration of 0.1-1.0 mg/mL. Do not vortex.

**[ STORAGE AND STABILITY ]**

**Storage:** Avoid repeated freeze/thaw cycles.

Store at 2-8°C for one month.

Aliquot and store at -80°C for 12 months.

**Stability Test:** The thermal stability is described by the loss rate. The loss rate was determined by accelerated thermal degradation test, that is, incubate the protein at 37°C for 48h, and no obvious degradation and precipitation were observed. The loss rate is less than 5% within the expiration date under appropriate storage condition.

**[ SEQUENCE ]**

DALKSRVLSR	KVGLGYTPVC	EALDGGFSPV	QCCLAQGSCW	CVLASGEEVP	C
GTRVVGTPA	CESPQCPLPF	SGSDVTDGVV	FCETASSSGV	TTVQQCQLFC	
RQGLRNVFSP	GPLICNLESQ	RWVTLPLPRA	CQRPQLWQTM	QTQAHFQLLL	
PPGKMCSIDY	SGLLQAFQVF	ILDELITRGF	CQIQVKTFGT	LVSRTVCDNS	
SIQVGCLTAE	RLGVNATWKL	QLEDISVGSL	PNLHSIERAL	MGQDLLGRFA	
NLIQSGKFQL	HLDSKTFSAD	TILYFLNGDR	FVTSPMTQLG	CLEGFYRVST	
TSQDPLGCVK	CPEGSFSQDG	KCTPCPAGTY	QQQAGSSACI	PCPRGRTTII	
TGAFSKTHC					

**[ IDENTIFICATION ]**

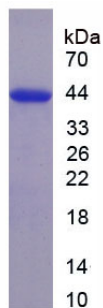


Figure. SDS-PAGE

**[ IMPORTANT NOTE ]**

The kit is designed for in vitro and research use only, we will not be responsible for any issue if the kit was used in clinical diagnostic or any other procedures.