

RPC239Hu01 10µg
Recombinant Thyroid Hormone Receptor Alpha (THRa)
Organism Species: *Homo sapiens (Human)*
Instruction manual

FOR RESEARCH USE ONLY
NOT FOR USE IN CLINICAL DIAGNOSTIC PROCEDURES

13th Edition (Revised in Aug, 2023)

[PROPERTIES]

Source: Prokaryotic expression

Host: *E.coli*

Residues: Met1~Pro490

Tags: N-terminal His Tag

Subcellular Location: Nucleus

Purity: > 97%

Traits: Freeze-dried powder

Buffer formulation: 20mM Tris, 150mM NaCl, pH8.0, containing 1mM EDTA, 1mM DTT, 0.01% SKL, 5% Trehalose .

Original Concentration: 200µg/mL

Applications: Positive Control; Immunogen; SDS-PAGE; WB.

(May be suitable for use in other assays to be determined by the end user.)

Predicted isoelectric point: 6.4

Predicted Molecular Mass: 58.5kDa

Accurate Molecular Mass: 59kDa as determined by SDS-PAGE reducing conditions.

[USAGE]

Reconstitute in 20mM Tris, 150mM NaCl (pH8.0) to a concentration of 0.1-1.0 mg/mL. Do not vortex.

[STORAGE AND STABILITY]

Storage: Avoid repeated freeze/thaw cycles.

Store at 2-8°C for one month.

Aliquot and store at -80°C for 12 months.

Stability Test: The thermal stability is described by the loss rate. The loss rate was determined by accelerated thermal degradation test, that is, incubate the protein at 37°C for 48h, and no obvious degradation and precipitation were observed. The loss rate is less than 5% within the expiration date under appropriate storage condition.

[SEQUENCE]

```

MEQKPSKVEC  GSDPEENSAR  SPDGKRKRKN  GQCSLKTSMS  GYIPSYLDKD
EQCVVCGDKA  TGYHYRCITC  EGCKGFFRRT  IQKNLHPTYS  CKYDSCCVID
KITRNQCQLC  RFKKCIAVGM  AMDLVLDDSK  RVAKRKLIEQ  NRERRRKEEM
IRSLQQRPEP  TPEEWDLIHI  ATEAHRSTNA  QGSHWKQRRK  FLPDDIGQSP
IVSMPDGDV  DLEAFSEFTK  IITPAITRVV  DFAKKLPMFS  ELPCEDQIIL
LKGCCMEIMS  LRAAVRYDPE  SDTLTLSGEM  AVKREQLKNG  GLGVVSDAIF
ELGKSLSAFN  LDDTEVALLQ  AVLLMSTDRS  GLLCVDKIEK  SQEAYLLAFE
HYVNHKHNH  PHFWPKLLMK  EREVQSSILY  KGAAAEGRPG  GSLGVHPEGQ
QLLGMHVVQG  PQVRQLEQQL  GEAGSLQGPV  LQHSPKSPQ  QRLLELLHRS
GILHARAVCG  EDDSSEADSP  SSSEEEPEVC  EDLAGNAASP
  
```

[IDENTIFICATION]

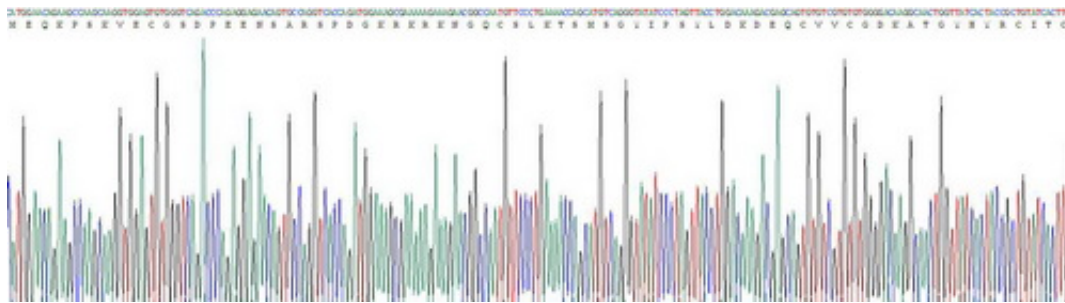


Figure . Gene Sequencing (extract)

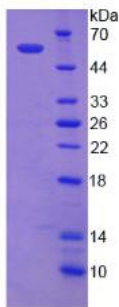


Figure. SDS-PAGE

[IMPORTANT NOTE]

The kit is designed for research use only, we will not be responsible for any issue if the kit was used in clinical diagnostic or any other procedures.