

**RPA394Ra01 50µg**

**Recombinant Tissue Factor Pathway Inhibitor (TFPI)**

**Organism Species: *Rattus norvegicus* (Rat)**

***Instruction manual***

FOR RESEARCH USE ONLY

NOT FOR USE IN CLINICAL DIAGNOSTIC PROCEDURES

---

12th Edition (Revised in Aug, 2016)

**[ PROPERTIES ]**

**Source:** Prokaryotic expression

**Host:** *E.coli*

**Residues:** Leu29~His302

**Tags:** N-terminal His Tag

**Subcellular Location:** Secreted

**Purity:** > 90%

**Traits:** Freeze-dried powder

**Buffer formulation:** PBS, pH7.4, containing 0.05% SKL, 5% Trehalose.

**Original Concentration:** 50µg/mL

**Applications:** Positive Control; Immunogen; SDS-PAGE; WB.

(May be suitable for use in other assays to be determined by the end user.)

**Predicted isoelectric point:** 8.2

**Predicted Molecular Mass:** 32.7kDa

**Accurate Molecular Mass:** 36kDa as determined by SDS-PAGE reducing conditions.

**Phenomenon explanation:**

The possible reasons that the actual band size differs from the predicted are as follows:

1. Splice variants: Alternative splicing may create different sized proteins from the same gene.
2. Relative charge: The composition of amino acids may affect the charge of the protein.
3. Post-translational modification: Phosphorylation, glycosylation, methylation etc.
4. Post-translation cleavage: Many proteins are synthesized as pro-proteins, and then cleaved to give the active form.
5. Polymerization of the target protein: Dimerization, multimerization etc.

**[ USAGE ]**

Reconstitute in ddH<sub>2</sub>O to a concentration of 0.1-0.5 mg/mL. Do not vortex.

**[ STORAGE AND STABILITY ]**

**Storage:** Avoid repeated freeze/thaw cycles.

Store at 2-8°C for one month.

Aliquot and store at -80°C for 12 months.

**Stability Test:** The thermal stability is described by the loss rate. The loss rate was determined by accelerated thermal degradation test, that is, incubate the protein at 37°C for 48h, and no obvious degradation and precipitation were observed. The loss rate is less than 5% within the expiration date under appropriate storage condition.

**[ SEQUENCE ]**

```

                                LP EEDDDTINTD SELRPMKPLH
TFCAMKAEDG PCKAMIRSYY FNMNSHQCEE FIYGGCRGNK NRFDLLEECR
KTCIPGYKKT TIKTTSGAEK PDFCFLEEDP GICRGMTRY FYNNQSKQCE
QFKYGGCLGN SNNFETLEEC RNTCEDPVNE VQKGDYVTNQ ITVDRRTVN
NVVIPQATKA PSQWDYDGPS WCLEPADSGL CKASEKRFYY NPAIGKCRQF
NYTGCGGNNN NFTTKQDCNR ACKKDSSKKS SKRAKTQRRR KSFVKVMYEN
IH
    
```

**[ IDENTIFICATION ]**

TCTGCGGGAGGAGCGATGATCATAAACACGGATTCGGGCTTCGGCCATGAAACCGSTTCGATGCATCTCTGTCATGMAGCGGAGAGGCGGCCCTGCAACCAATGATGGGGGTATTTATCTCATATGACGTCCGGTGTGAGATTTATATAACGGGGGATTCAGGGAACAGAAACGAAACGATTTGATACTCTGAGG  
 I P E E D D D T I N T D S E L R P M K P L H T F C A N K A E D G P C K A M I R S Y Y L N H N S H Q C E E F I Y G G C R G N K N R F D T L E E

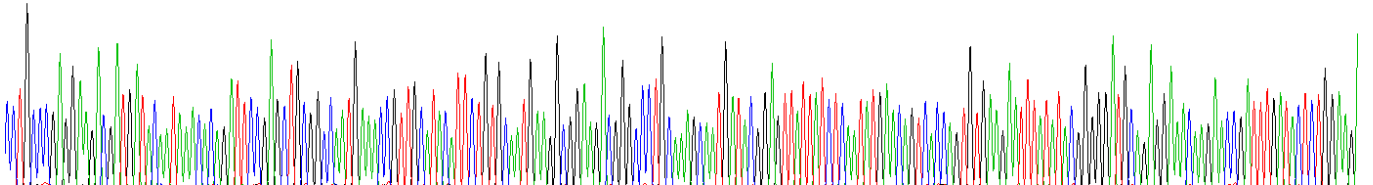


Figure. Gene Sequencing (Extract)

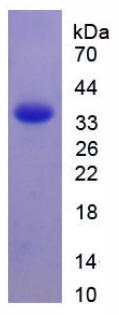


Figure. SDS-PAGE

**[ IMPORTANT NOTE ]**

The kit is designed for research use only, we will not be responsible for any issue if the kit was used in clinical diagnostic or any other procedures.