

**RPG794Hu03 100µg**

**Recombinant Transcobalamin I (TCN1)**

**Organism Species: *Homo sapiens (Human)***

***Instruction manual***

FOR RESEARCH USE ONLY

NOT FOR USE IN CLINICAL DIAGNOSTIC PROCEDURES

---

12th Edition (Revised in Aug, 2016)

**[ PROPERTIES ]**

**Source:** Prokaryotic expression

**Host:** *E.coli*

**Residues:** Glu24~Tyr433

**Tags:** N-terminal His and GST Tag

**Subcellular Location:** Secreted

**Purity:** > 80%

**Traits:** Freeze-dried powder

**Buffer formulation:** PBS, pH7.4, containing 0.01% SKL, 5% Trehalose.

**Original Concentration:** 200µg/mL

**Applications:** Positive Control; Immunogen; SDS-PAGE; WB.

(May be suitable for use in other assays to be determined by the end user.)

**Predicted isoelectric point:** 4.9

**Predicted Molecular Mass:** 75.6kDa

**Accurate Molecular Mass:** 75kDa as determined by SDS-PAGE reducing conditions.

**[ USAGE ]**

Reconstitute in 10mM PBS (pH7.4) to a concentration of 0.1-1.0 mg/mL. Do not vortex.

**[ STORAGE AND STABILITY ]**

**Storage:** Avoid repeated freeze/thaw cycles.

Store at 2-8°C for one month.

Aliquot and store at -80°C for 12 months.

**Stability Test:** The thermal stability is described by the loss rate. The loss rate was determined by accelerated thermal degradation test, that is, incubate the protein at 37°C for 48h, and no obvious degradation and precipitation were observed. The loss rate is less than 5% within the expiration date under appropriate storage condition.

**[ SEQUENCE ]**

EICEVSE ENYIRLKPLL NTMIQSNYNR  
GTSAVNVVLS LKLVGIQIQT LMQKMIQQIK YNVKSRLSDV SSGELALIIL  
ALGVCRAEE NLIYDYHLID KLENKFQAEI ENMEAHNGTP LTNYQLSLD  
VLALCLFNGN YSTAEVNHF TPENKNYYFG SQFSVDTGAM AVLALTCVKK  
SLINGQIKAD EGSLKNISY TKSLVEKILS EKKENGLIGN TFSTGEAMQA  
LFVSSDYNE NDWNCQOTLN TVLTEISQGA FSNPNAAAQV LPALMGKTF  
DINKDSSCVS ASGNFNISAD EPITVTPPDS QSYISVNYSV RINETYFTNV  
TVLNGSVFLS VMEKAQKMND TIFGFTMEER SWGPYITCIQ GLCANNNDRT  
YWELLSGGEP LSQGAGSYVV RGENLEVRW SKY

**[ IDENTIFICATION ]**

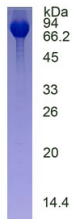


Figure. SDS-PAGE

**[ IMPORTANT NOTE ]**

The kit is designed for research use only, we will not be responsible for any issue if the kit was used in clinical diagnostic or any other procedures.