

RPG796Ra01 100µg

Recombinant Transcobalamin II, Macrocytic Anemia (TCN2)

Organism Species: *Rattus norvegicus* (Rat)

Instruction manual

FOR RESEARCH USE ONLY

NOT FOR USE IN CLINICAL DIAGNOSTIC PROCEDURES

12th Edition (Revised in Aug, 2016)

[**PROPERTIES**]

Source: Prokaryotic expression

Host: *E.coli*

Residues: Glu19~Met427

Tags: N-terminal His Tag

Subcellular Location: Secreted

Purity: > 90%

Traits: Freeze-dried powder

Buffer formulation: 20mM Tris, 150mM NaCl, pH8.0, containing 0.01% skl, 5%Trehalose.

Original Concentration: 200µg/mL

Applications: Positive Control; Immunogen; SDS-PAGE; WB.

(May be suitable for use in other assays to be determined by the end user.)

Predicted isoelectric point: 7.8

Predicted Molecular Mass: 49.3kDa

Accurate Molecular Mass: 49kDa as determined by SDS-PAGE reducing conditions.

[**USAGE**]

Reconstitute in 20mM Tris, 150mM NaCl (pH8.0) to a concentration of 0.1-1.0 mg/mL. Do not vortex.

[**STORAGE AND STABILITY**]

Storage: Avoid repeated freeze/thaw cycles.

Store at 2-8°C for one month.

Aliquot and store at -80°C for 12 months.

Stability Test: The thermal stability is described by the loss rate. The loss rate was determined by accelerated thermal degradation test, that is, incubate the protein at 37°C for 48h, and no obvious degradation and precipitation were observed. The loss rate is less than 5% within the expiration date under appropriate storage condition.

[**SEQUENCE**]

```

EF CVIPKMDGQL VEKLGQRLLP WMDRLSSEQL
NPSIYVGLRL SSMQAGTKEN LYLHNLKLHY QQCLLRSTSS DDNSGCQTKI
SGGSLALYLL ALRANCELLG SRKGDRMVSQ LKWFLEDEKK AIGHHHEGHP
HTSYQQYGLS ILALCVHRKR VHDSVVGKLL YAVEHDYFTY QGHLSVDTEA
MAGLAFTCLE RFNFNSDLRP RITTAIETVR EKILKAQAPE GYFGNIYSTP
LALQMLMTSP GVGLGPACLK ARKSLLLSLQ DGAFQNPMMI SQLLPVLNHK
TYLNLISPDC QAPRVMLVPA TEDPVHLSEV SVTLKVSSVL PPYERTVSVF
AGASLEDVLN RARDLGEFTY GTQASLSGPY LTSVLGKEAG DREYWQLLRV
PDTPLLQGIA DYKPKNGETI ELRLVKM

```

[IDENTIFICATION]

ATGATCCGAAATTCGTGTAAATACCAAAGATGGACGGCCAGCTGGTAAAGAAAGCTGGGCCAGGCTCTCTTAACCTTGGATGGATCGGCTTTCCTCAGAGCAGTTGAACCCCAAGCATCTAAGTGGGCTGGGGCTTTCCAACAATGCAAGGCTGGGACCAAGGAGAACCTCTAACCTTCAAACTT

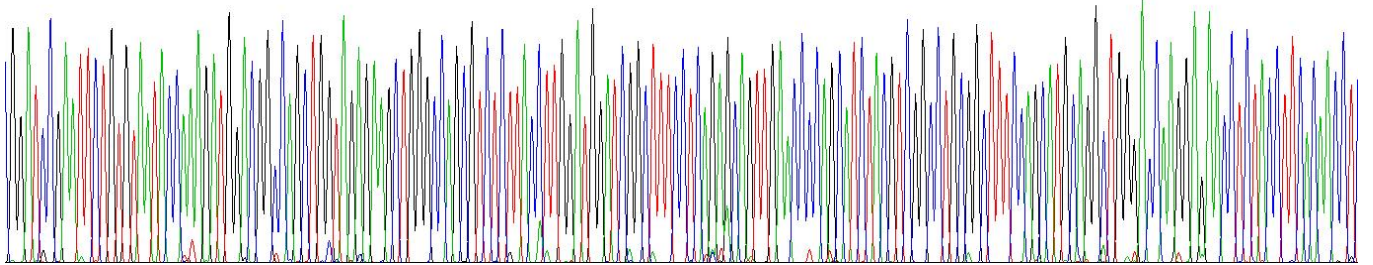
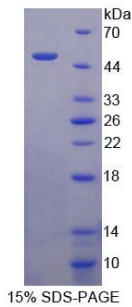


Figure . Gene Sequencing (extract)



[IMPORTANT NOTE]

The kit is designed for research use only, we will not be responsible for any issue if the kit was used in clinical diagnostic or any other procedures.