

RPB171Ra01 200µg
Recombinant Transferrin Receptor (TFR)
Organism Species: *Rattus norvegicus* (Rat)
Instruction manual

FOR RESEARCH USE ONLY
NOT FOR USE IN CLINICAL DIAGNOSTIC PROCEDURES

12th Edition (Revised in Aug, 2016)

[PROPERTIES]

Source: Prokaryotic expression

Host: *E.coli*

Residues: Met587~Asn756

Tags: N-terminal His Tag

Subcellular Location: Membrane

Purity: > 97%

Traits: Freeze-dried powder

Buffer formulation: 20mM Tris, 150mM NaCl, pH8.0, containing 0.01% skl, 5%Trehalose.

Original Concentration: 50µg/mL

Applications: Positive Control; Immunogen; SDS-PAGE; WB.

(May be suitable for use in other assays to be determined by the end user.)

Predicted isoelectric point: 5.2

Predicted Molecular Mass: 21.1kDa

Accurate Molecular Mass: 22kDa as determined by SDS-PAGE reducing conditions.

[USAGE]

Reconstitute in ddH₂O to a concentration of 0.1-0.5 mg/mL. Do not vortex.

[STORAGE AND STABILITY]

Storage: Avoid repeated freeze/thaw cycles.

Store at 2-8°C for one month.

Aliquot and store at -80°C for 12 months.

Stability Test: The thermal stability is described by the loss rate. The loss rate was determined by accelerated thermal degradation test, that is, incubate the protein at 37°C for 48h, and no obvious degradation and precipitation were observed. The loss rate is less than 5% within the expiration date under appropriate storage condition.

[SEQUENCE]

MVRT AAEVAGQFII
 KLTHDIELTL DYEMYSKLL SFMKDLNQFK ADIKDMGLSL QWLYSARGDY
 FRATSRLTTD FHNAEKTNRF VMREINDRIM KVEYHFLSPY VSPRESPFRH
 IFWGSGSHTL SALVENLRLR QKNITAFNET LFRNQLALAT WTIQGVANAL
 SGDIWN

[IDENTIFICATION]

3 TGG TTG TCG GCG GCG AGG GGC CCG TAC TCA TTT TTA ACT TCC CA TGG AGT TGG GGT TGG CCG TGG ACT CTT GGA TTT CCA CAG CAA CTT CCA TTT ATG GGG GCT GAG CCG TCA CAG CAG GGT TCG AGG AT TGG GCT TTA GCT TCA G TGC TGT ATG TCC TCG TGG G
 K Y V T A A E V A G Q F I I E L T L T H D I E L T L D Y E M Y S K L L S F M K D L N Q F K A D I K D M G L S L Q W L Y S A R G D Y
 R V T A A E V A G Q F I I E L T L T H D I E L T L D Y E M Y S K L L S F M K D I N Q F K A D I E R H G L I O V L Y A R G

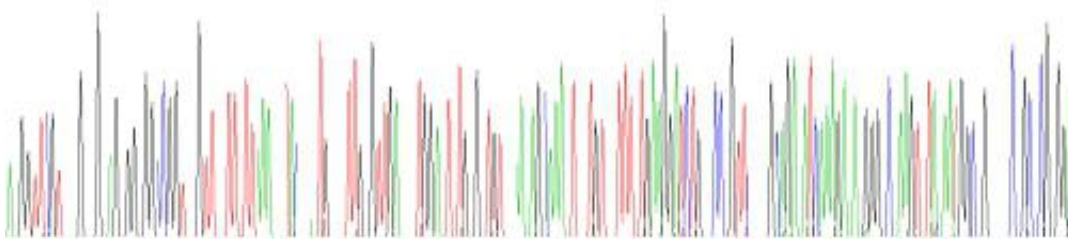


Figure . Gene Sequencing (extract)

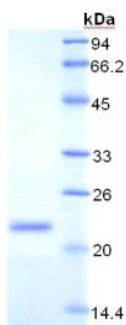


Figure. SDS-PAGE

[IMPORTANT NOTE]

The kit is designed for research use only, we will not be responsible for any issue if the kit was used in clinical diagnostic or any other procedures.