

**RPC795Mu02 100µg**  
**Recombinant Transmembrane Protease, Serine 2 (TMPRSS2)**  
**Organism Species: *Mus musculus* (Mouse)**  
***Instruction manual***

FOR RESEARCH USE ONLY  
NOT FOR USE IN CLINICAL DIAGNOSTIC PROCEDURES

---

12th Edition (Revised in Aug, 2016)

**[ PROPERTIES ]**

**Source:** Prokaryotic expression

**Host:** *E.coli*

**Residues:** Trp105~Ser490

**Tags:** N-terminal His Tag

**Subcellular Location:** Membrane, Secreted

**Purity:** > 95%

**Traits:** Freeze-dried powder

**Buffer formulation:** 20mM Tris, 150mM NaCl, pH8.0, containing 0.01% SKL, 5% Trehalose.

**Original Concentration:** 200µg/mL

**Applications:** Positive Control; Immunogen; SDS-PAGE; WB.

(May be suitable for use in other assays to be determined by the end user.)

**Predicted isoelectric point:** 7.0

**Predicted Molecular Mass:** 45.7kDa

**Accurate Molecular Mass:** 46kDa as determined by SDS-PAGE reducing conditions.

**[ USAGE ]**

Reconstitute in 20mM Tris, 150mM NaCl (pH8.0) to a concentration of 0.1-1.0 mg/mL. Do not vortex.

**[ STORAGE AND STABILITY ]**

**Storage:** Avoid repeated freeze/thaw cycles.

Store at 2-8°C for one month.

Aliquot and store at -80°C for 12 months.

**Stability Test:** The thermal stability is described by the loss rate. The loss rate was determined by accelerated thermal degradation test, that is, incubate the protein at 37°C for 48h, and no obvious degradation and precipitation were observed. The loss rate is less than 5% within the expiration date under appropriate storage condition.

**[ SEQUENCE ]**

WRFWDS NCSTSEMECG SSGTCISSL WCDGVAHCPN GEDENRCVRL  
YGQSFILQVY SSQRKAWYPV CQDDWSESYG RAACKDMGYK NNFYSSQGIP  
DQSGATSFMK LNVSSGNVDL YKKLYHSDSC SSRMVVSLRC IECGVRSVKR  
QSRIVGGLNA SPGDWPQVS LHVQGVHVCV GSIITPEWIV TAAHCVEEPL  
SSPRYWTAFV GILRQSLMFY GSRHQVEKVI SHPNYDSKTK NNDIALMKLQ  
TPLAFNDLVK PVCLPNPGMM LDLDQECWIS GWGATYEKVK TSDVLNAAMV  
PLIEPSKCNV KYIYNNLITP AMICAGFLQG SVDSCQGDVG GPLVTLKNGI  
WWLIGDTSWG SGCALALRPG VYGNVTVFTD WIYQQMRANS

**[ IDENTIFICATION ]**

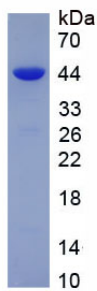


Figure. SDS-PAGE

**[ IMPORTANT NOTE ]**

The kit is designed for research use only, we will not be responsible for any issue if the kit was used in clinical diagnostic or any other procedures.