

**RPK477Mu01 100µg**  
**Recombinant Transmembrane Protein 27 (TMEM27)**  
**Organism Species: Mus musculus (Mouse)**  
*Instruction manual*

FOR IN VITRO USE AND RESEARCH USE ONLY  
NOT FOR USE IN CLINICAL DIAGNOSTIC PROCEDURES

---

---

12th Edition (Revised in Aug, 2016)

## [ **PROPERTIES** ]

**Source:** Prokaryotic expression.

**Host:** *E. coli*

**Residues:** Ile12~Leu222

**Tags:** Two N-terminal Tags, His-tag and GST-tag

**Tissue Specificity:** Kidney, Pancreas.

**Subcellular Location:** Membrane; Single-pass type I membrane protein.

**Purity:** >80%

**Traits:** Freeze-dried powder

**Buffer formulation:** 20mM Tris, 150mM NaCl, pH8.0, containing 1mM EDTA, 1mM DTT, 0.01% sarcosyl, 5%Trehalose and Proclin300.

**Original Concentration:** 200ug/mL

**Applications:** SDS-PAGE; WB; ELISA; IP; CoIP; Purification; Amine Reactive Labeling.

(May be suitable for use in other assays to be determined by the end user.)

**Predicted isoelectric point:** 6.1

**Predicted Molecular Mass:** 53.7kDa

**Accurate Molecular Mass:** 54kDa as determined by SDS-PAGE reducing conditions.

## [ **USAGE** ]

Reconstitute in 20mM Tris, 150mM NaCl (pH8.0) to a concentration of 0.1-1.0 mg/mL. Do not vortex.

## [ **STORAGE AND STABILITY** ]

**Storage:** Avoid repeated freeze/thaw cycles.

Store at 2-8°C for one month.

Aliquot and store at -80°C for 12 months.

**Stability Test:** The thermal stability is described by the loss rate. The loss rate was determined by accelerated thermal degradation test, that is, incubate the protein at 37°C for 48h, and no obvious degradation and precipitation were observed. The loss rate is less than 5% within the expiration date under appropriate storage condition.

[ **SEQUENCE** ]

```

                IHAELCHPD AENAFKVRLS IRAALGDKAY VWDTDQEYLF
RAMVAFSMRK VPNREATEIS HVLLCNITQR VSFWFVVTDP SNNYTLPAAE
VQSAIRKNRN RINSAFFLDD HTLEFLKIPS TLAPPMEPSV PVWIIIVGVI
FCIVTVAIAL LVLSGIRQRR RNNKGPPGVE DAEDKCENII TIENGIPCDP
LDMKGGHIND GFLTEDERLT PL
    
```

[ **IDENTIFICATION** ]

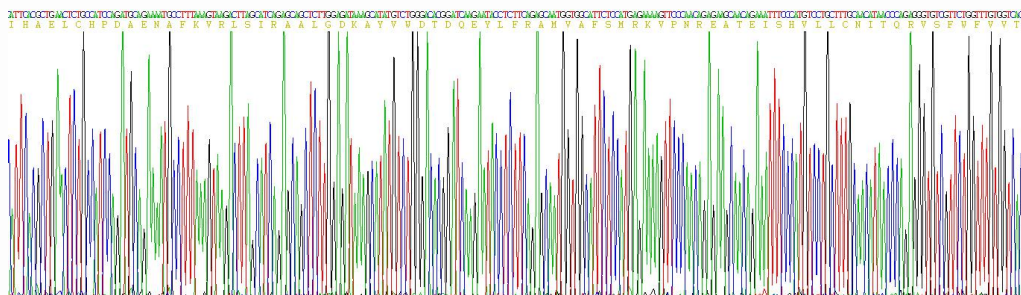


Figure 1. Gene Sequencing (Extract)

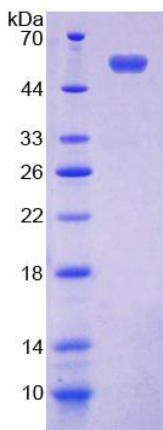


Figure 2. SDS-PAGE