

**RPX190PI01 1**

**Recombinant Trithorax Related Protein 4 (ATXR4)**

**Organism Species: *Spinacia oleracea* (Spinach)**

***Instruction manual***

FOR RESEARCH USE ONLY

NOT FOR USE IN CLINICAL DIAGNOSTIC PROCEDURES

---

13th Edition (Revised in Aug, 2023)

## [ **PROPERTIES** ]

**Source:** Prokaryotic expression

**Host:** *E.coli*

**Residues:** Pro42~Arg320

**Tags:** N-terminal His Tag

**Subcellular Location:** Nucleus

**Purity:** > 90%

**Traits:** Freeze-dried powder

**Buffer formulation:** PBS, pH7.4, containing 0.01% SKL, 5% Trehalose.

**Original Concentration:** 100µg

**Applications:** Positive Control; Immunogen; SDS-PAGE; WB.

(May be suitable for use in other assays to be determined by the end user.)

**Predicted isoelectric point:** 6.0

**Predicted Molecular Mass:** 34.7kDa

**Accurate Molecular Mass:** 37kDa as determined by SDS-PAGE reducing conditions.

## [ **USAGE** ]

Reconstitute in 10mM PBS (pH7.4) to a concentration of 0.1-1.0 mg/mL. Do not vortex.

## [ **STORAGE AND STABILITY** ]

**Storage:** Avoid repeated freeze/thaw cycles.

Store at 2-8°C for one month.

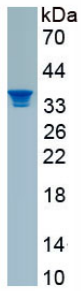
Aliquot and store at -80°C for 12 months.

**Stability Test:** The thermal stability is described by the loss rate. The loss rate was determined by accelerated thermal degradation test, that is, incubate the protein at 37°C for 48h, and no obvious degradation and precipitation were observed. The loss rate is less than 5% within the expiration date under appropriate storage condition.

## [ **SEQUENCE** ]

PPIRVGLTESAGRAVFA<sup>TR</sup>KIGAGD<sup>LI</sup>HTAKPVVAC<sup>PS</sup>LLKLD<sup>SV</sup>CYL<sup>CL</sup>KKLMGSA<sup>KF</sup>ED<sup>RG</sup>VSY<sup>CS</sup>QEQ<sup>EN</sup>SKG<sup>FL</sup>DVET<sup>RA</sup>DW<sup>SS</sup>FDDY<sup>CR</sup>TH<sup>NF</sup>KY<sup>PL</sup>MV<sup>KR</sup>LCC<sup>MI</sup>ISG<sup>AR</sup>PAD<sup>CL</sup>DIL<sup>Q</sup>PA<sup>VL</sup>SSEM<sup>ISK</sup>IE  
DGY<sup>LL</sup>WNA<sup>FR</sup>KAN<sup>FK</sup>DD<sup>VA</sup>FL<sup>TK</sup>Q<sup>W</sup>Y<sup>TA</sup>ILAR<sup>IR</sup>INA<sup>FR</sup>IDL<sup>V</sup>GG<sup>SC</sup>GED<sup>LL</sup>SLAA<sup>AS</sup>VE<sup>GE</sup>GAV<sup>GH</sup>AVY<sup>ML</sup>PS<sup>FY</sup>NH<sup>DC</sup>DF<sup>NA</sup>HI<sup>I</sup>W<sup>LH</sup>NAD<sup>AR</sup>L<sup>N</sup>TL<sup>RD</sup>VE<sup>EG</sup>E<sup>BL</sup>RIC<sup>Y</sup>IDA<sup>SM</sup>G<sup>Y</sup>EAR<sup>QT</sup>IL<sup>SQ</sup>GF<sup>PL</sup>C<sup>N</sup>CL  
R

**[ IDENTIFICATION ]**



**[ IMPORTANT NOTE ]**

The kit is designed for research use only, we will not be responsible for any issue if the kit was used in clinical diagnostic or any other procedures.