

RPG687Mu01 50µg

Recombinant Tropomodulin 3 (TMOD3)

Organism Species: *Mus musculus* (Mouse)

Instruction manual

FOR IN VITRO USE AND RESEARCH USE ONLY
NOT FOR USE IN CLINICAL DIAGNOSTIC PROCEDURES

12th Edition (Revised in Aug, 2016)

[PROPERTIES]

Source: Prokaryotic expression

Host: *E.coli*

Residues: Met1~Gln352

Tags: N-terminal His Tag

Subcellular Location: Cytoplasm

Purity: > 97%

Traits: Freeze-dried powder

Buffer formulation: 20mM Tris, 150mM NaCl, pH8.0, containing 1mM EDTA, 1mM DTT, 0.01% SKL, 5% Trehalose and Proclin300.

Original Concentration: 200µg/mL

Applications: Positive Control; Immunogen; SDS-PAGE; WB.

(May be suitable for use in other assays to be determined by the end user.)

Predicted isoelectric point: 5.0

Predicted Molecular Mass: 43.2kDa

Accurate Molecular Mass: 43kDa as determined by SDS-PAGE reducing conditions.

[USAGE]

Reconstitute in 20mM Tris, 150mM NaCl (pH8.0) to a concentration of 0.1-1.0 mg/mL. Do not vortex.

[STORAGE AND STABILITY]

Storage: Avoid repeated freeze/thaw cycles.

Store at 2-8°C for one month.

Aliquot and store at -80°C for 12 months.

Stability Test: The thermal stability is described by the loss rate. The loss rate was determined by accelerated thermal degradation test, that is, incubate the protein at 37°C for 48h, and no obvious degradation and precipitation were observed. The loss rate is less than 5% within the expiration date under appropriate storage condition.

[SEQUENCE]

MALPFRKDLG DYKDLDEDEL LGKLSESELK QLETVLDDLD PENALLPAGF
 RQKNQTSKSA TGPFDRELL SYLEKQALEH KDRDDYVPYT GEKKGKIFIP
 KQKPAQTLTE ETISLDPELE EALTSASDTE LCDLAAILGM HNLIADTPFC
 DVLGSSNGVN QERFPNVVKG EKILPVFDEP PNPTNVEESL KRIRENDARL
 VEVNLLNIKN IPIPTLKDFA KTLLEANTHVK HFSLAATRSN DPVAVAFADM
 LKVNKTLKSL NMESNFITGA GVLALIDALR DNETLMELKI DNQRQQLGTS
 VELEMAKMLE ENTNILKFGY QFTQQGPRTR AANAITKNND LVRKRRIEGD
 HQ

[IDENTIFICATION]

ATGGCTGCGTTCCGGAGCTTGGGGACTACAGGACTGGATGAGGAGCCTCTTGGAGCTTGGGATCGAGCTGAAACAGCTGGAGACTGCTCGATGATCTTGAACCGGAGATGCTCTGCTGAGGGTTTGGCAGAGACGAGACATCAAGTCTGCGAAGGACCTTTGATAGAGAGCGCTCC
 M A L P F R K D L G D Y K D L D E D E L L G K L S E S E L K Q L E T V L D D L D P E N A L L P A G F R Q K N Q T S K S A T G P F D R E R L L

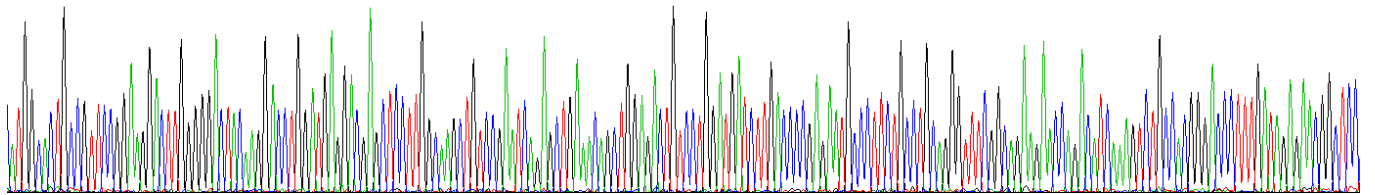
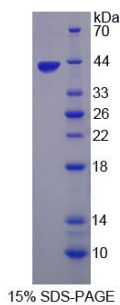


Figure. Gene Sequencing (Extract)



[IMPORTANT NOTE]

The kit is designed for in vitro and research use only, we will not be responsible for any issue if the kit was used in clinical diagnostic or any other procedures.