

RPE715Hu01 100µg

Recombinant Tubulin Alpha 1B (TUBa1B)

Organism Species: *Homo sapiens (Human)*

Instruction manual

FOR RESEARCH USE ONLY

NOT FOR USE IN CLINICAL DIAGNOSTIC PROCEDURES

12th Edition (Revised in Aug, 2016)

[PROPERTIES]

Source: Prokaryotic expression

Host: *E.coli*

Residues: Met1~Tyr451

Tags: N-terminal His Tag

Subcellular Location: Cytoplasm

Purity: > 90%

Traits: Freeze-dried powder

Buffer formulation: 20mM Tris, 150mM NaCl, pH8.0, containing 0.01% skl, 5%Trehalose.

Original Concentration: 150µg/mL

Applications: Positive Control; Immunogen; SDS-PAGE; WB.

(May be suitable for use in other assays to be determined by the end user.)

Predicted isoelectric point: 4.7

Predicted Molecular Mass: 53.7kDa

Accurate Molecular Mass: 54kDa as determined by SDS-PAGE reducing conditions.

[USAGE]

Reconstitute in 20mM Tris, 150mM NaCl (pH8.0) to a concentration of 0.1-1.0 mg/mL. Do not vortex.

[STORAGE AND STABILITY]

Storage: Avoid repeated freeze/thaw cycles.

Store at 2-8°C for one month.

Aliquot and store at -80°C for 12 months.

Stability Test: The thermal stability is described by the loss rate. The loss rate was determined by accelerated thermal degradation test, that is, incubate the protein at 37°C for 48h, and no obvious degradation and precipitation were observed. The loss rate is less than 5% within the expiration date under appropriate storage condition.

[SEQUENCE]

```

MRECISIHVG QAGVQIGNAC WELYCLEHGI QPDGQMPSDK TIGGGDDSFN
TFFSETGAGK HVPRAVFVDL EPTVIDEVRT GTYRQLFHPE QLITGKEDAA
NMYARGHYTI GKEIIDLVLD RIRKLADQCT GLQGFLVFHS FGGGTGSGFT
SLLMERLSVD YGKSKLEFS IYPAPQVSTA VVEPYNSILT THTTLEHSDC
AFMVDNEAIY DICRRNLDIE RPTYTNLNL ISQIVSSITA SLRFDGALNV
DLTEFQTNLV PYPRIHFPLA TYAPVISA EK AYHEQLSVAE ITNACFEPAN
QMVKCDPRHG KYMACCLLYR GDVVPKDVNA AIATIKTKRS IQFVDWCPTG
FKVGINYQPP TVVPGDLAK VQRAVCMLSN TTAIAEAWAR LDHKFDL MYA
KRAVHWHYVG EGMEEGEFSE AREDMAALEK DYEEVGVD SV EGE EEEEGEE
Y

```

[IDENTIFICATION]

ATGAGGAGGAGCATATGGCTAGCATGACTGGTGGACAGCAAAATGGGTGGGGATCCATGGGTGGAGTGCATCTCCATCCAGGTGGCCAGGCTGGTGGTCCGATTGGCAATGGCTTCTGGAGCTCTACTGCTGGACAGCGCATCCAGCCGATGGCCAGATGGCCAGATGGCCAGTGAAGAGCCATTGGGGAGGAGATGCTCTTCAGCK

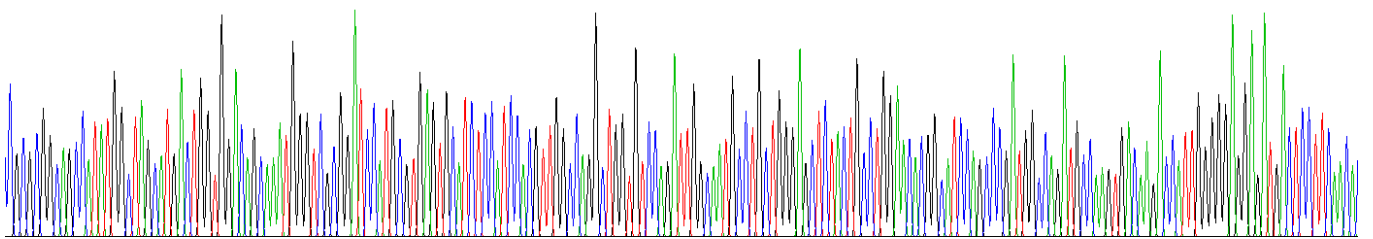


Figure . Gene Sequencing (extract)

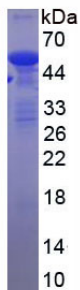


Figure. SDS-PAGE

[IMPORTANT NOTE]

The kit is designed for research use only, we will not be responsible for any issue if the kit was used in clinical diagnostic or any other procedures.