

RPE722Hu01 50µg

Recombinant Tubulin Tyrosine Ligase (TTL)

Organism Species: *Homo sapiens (Human)*

Instruction manual

FOR RESEARCH USE ONLY

NOT FOR USE IN CLINICAL DIAGNOSTIC PROCEDURES

13th Edition (Revised in Aug, 2023)

[PROPERTIES]

Source: Prokaryotic expression

Host: *E.coli*

Residues: Met1~Leu377

Tags: Two N-terminal Tags, His-tag and SUMO-tag

Subcellular Location: Cytoplasm

Purity: > 80%

Traits: Freeze-dried powder

Buffer formulation: PBS, pH7.4, containing 0.01% SKL, 5% Trehalose .

Original Concentration: 120µg/mL

Applications: Positive Control; Immunogen; SDS-PAGE; WB.

(May be suitable for use in other assays to be determined by the end user.)

Predicted isoelectric point: 6.3

Predicted Molecular Mass: 56.9kDa

Accurate Molecular Mass: 57kDa as determined by SDS-PAGE reducing conditions.

[USAGE]

Reconstitute in 10mM PBS (pH7.4) to a concentration of 0.1-1.0 mg/mL. Do not vortex.

[STORAGE AND STABILITY]

Storage: Avoid repeated freeze/thaw cycles.

Store at 2-8°C for one month.

Aliquot and store at -80°C for 12 months.

Stability Test: The thermal stability is described by the loss rate. The loss rate was determined by accelerated thermal degradation test, that is, incubate the protein at 37°C for 48h, and no obvious degradation and precipitation were observed. The loss rate is less than 5% within the expiration date under appropriate storage condition.

[SEQUENCE]

```
MYTFVVRDEN SSVYAEVSRL LLATGHWKRL RRDNPRFNLN LGERNRLPFG  
RLGHEPGLV QLVNYYRGAD KLCRKASLVK LIKTSPELAE SCTWFPESYV I  
YPTNLKTP VAPAQNGIQP PISNSRTDER EFFLASYNRK KEDGEGNWVI AK  
SSAGAKG EGILISSEAS ELDFIDNQG QVHVIQKYLE HPLLEPGHR KFD  
IRSWVL VDHQYNIYLY REGVLRTASE PYHVDNFQDK TCHLTNHCIQ KEYS  
KNYGK YEEGNEMFFK EFNQYLTSAL NITLESSILL QIKHIIRNCL LSVEP  
AIST KHLPYQSFQL FGFDFMVDEE LKVWLVIEVNG APACAQKLYA ELCQGI  
VDI AISSVFPPPD VEQPQTQPAA FIKL
```

[IDENTIFICATION]

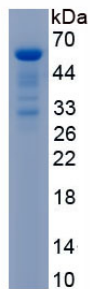


Figure. SDS-PAGE

[IMPORTANT NOTE]

The kit is designed for research use only, we will not be responsible for any issue if the kit was used in clinical diagnostic or any other procedures.