

**RPG483Mu01 100ug**

**Recombinant Tubulointerstitial Nephritis Antigen Like Protein 1 (TINAGL1)**

**Organism Species: *Mus musculus* (Mouse)**

***Instruction manual***

FOR RESEARCH USE ONLY

NOT FOR USE IN CLINICAL DIAGNOSTIC PROCEDURES

---

13th Edition (Revised in Aug, 2023)

**[ PROPERTIES ]**

**Source:** Prokaryotic expression

**Host:** *E.coli*

**Residues:** Arg22~His466

**Tags:** N-terminal His Tag

**Subcellular Location:** Secreted

**Purity:** > 90%

**Traits:** Freeze-dried powder

**Buffer formulation:** PBS, pH7.4, containing 0.01% SKL, 5% Trehalose.

**Original Concentration:** 200µg/mL

**Applications:** Positive Control; Immunogen; SDS-PAGE; WB.

(May be suitable for use in other assays to be determined by the end user.)

**Predicted isoelectric point:** 6.4

**Predicted Molecular Mass:** 54.1kDa

**Accurate Molecular Mass:** 54kDa as determined by SDS-PAGE reducing conditions.

**[ USAGE ]**

Reconstitute in 10mM PBS (pH7.4) to a concentration of 0.1-1.0 mg/mL. Do not vortex.

**[ STORAGE AND STABILITY ]**

**Storage:** Avoid repeated freeze/thaw cycles.

Store at 2-8°C for one month.

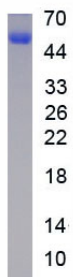
Aliquot and store at -80°C for 12 months.

**Stability Test:** The thermal stability is described by the loss rate. The loss rate was determined by accelerated thermal degradation test, that is, incubate the protein at 37°C for 48h, and no obvious degradation and precipitation were observed. The loss rate is less than 5% within the expiration date under appropriate storage condition.

**[ SEQUENCE ]**

RRSRWRREL APGLHLRGIR DAGGRYCQEQ DMCCRGRAD ECALPYLGAT  
CYCDLFCNRT VSDCCPDFWD FCLGIPPPFP PVQGCMHGG RIYPVFGTYW  
DNCNRCTCHE GGHWECDQEP CLVDPDMIKAINRGNYGWQAGNHS  
AFWGM TLDEGIRYRL GTIRPSSTVM NMNEIYTVLG QGEVLPTAFEASEK  
WPNLI HEPLDQGNCA GSWAFSTAAV ASDRVSISL GHMTPILSPQNLL  
SCDTHH QQGCRGGRLD GAWWFLRRRG VVSDNCYPFS GREQNEASP  
TPRCMMHSRA MGRGKRQATS RCPNGQVDSNDIYQVTPAYR LGSDEKEIM  
KELMENGPVQ ALMEVHEDFF LYQRGIYSHT PVSQGRPEQY RRHGTHSVK  
ITGWGEETLP DGRTIKYWTA ANSWGPWWGE RGHFRIVRGT NECDIETFV  
LGVWGRVGME DMGHH

**[ IDENTIFICATION ]**



**[ IMPORTANT NOTE ]**

The kit is designed for research use only, we will not be responsible for any issue if the kit was used in clinical diagnostic or any other procedures.