

**RPD003Hu01 50µg**

**Recombinant Tyrosyl tRNA Synthetase (YARS)**

**Organism Species: *Homo sapiens (Human)***

***Instruction manual***

FOR RESEARCH USE ONLY

NOT FOR USE IN CLINICAL DIAGNOSTIC PROCEDURES

---

12th Edition (Revised in Aug, 2016)

**[ PROPERTIES ]**

**Source:** Prokaryotic expression

**Host:** *E.coli*

**Residues:** Gly2~Ser528

**Tags:** N-terminal His Tag

**Subcellular Location:** Cytoplasm

**Purity:** > 95%

**Traits:** Freeze-dried powder

**Buffer formulation:** PBS, pH7.4, containing 0.01% SKL, 5% Trehalose.

**Original Concentration:** 100µg/mL

**Applications:** Positive Control; Immunogen; SDS-PAGE; WB.

(May be suitable for use in other assays to be determined by the end user.)

**Predicted isoelectric point:** 6.6

**Predicted Molecular Mass:** 62.7kDa

**Accurate Molecular Mass:** 63kDa as determined by SDS-PAGE reducing conditions.

**[ USAGE ]**

Reconstitute in ddH<sub>2</sub>O to a concentration of 0.1-0.5 mg/mL. Do not vortex.

**[ STORAGE AND STABILITY ]**

**Storage:** Avoid repeated freeze/thaw cycles.

Store at 2-8°C for one month.

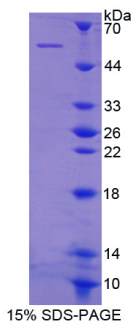
Aliquot and store at -80°C for 12 months.

**Stability Test:** The thermal stability is described by the loss rate. The loss rate was determined by accelerated thermal degradation test, that is, incubate the protein at 37°C for 48h, and no obvious degradation and precipitation were observed. The loss rate is less than 5% within the expiration date under appropriate storage condition.

**[ SEQUENCE ]**

GDAPSPEEK LHLITRNLQE VLGEEKLKEI LKERELKIYW GTATTGKPHV  
 AYFVPMKIA DFLKAGCEVT ILFADLHAYL DNMKAPWELL ELRVSYENV  
 IKAMLESIGV PLEKLFKFIG TDYQLSKEYT LDVYRLSSVV TQHDSKKAGA  
 EVVKQVEHPL LSGLLYPGLQ ALDEEYLKVD AQFGGIDQRK IFTFAEKYLP  
 ALGYSKRVLH MNPMPVGLTG SKMSSEEEES KIDLLDRKED VKKKLKAFC  
 EPGNVENNGV LSFVKHVLFP LKSEFVILRD EKWGGNKTYT AYVDLEK DFA  
 AEVHPGDLK NSVEVALNKL LDPIREKFNT PALKKASAA YPDPSKQKPM  
 AKGPAKNSEP EEVIPSRLDI RVGKIITVEK HPDADSLYVE KIDVGEAEP  
 TVVSGLVQFV PKEELQDRLV VVLCNLKPQK MRGVESQGML LCASIEGINR  
 QVEPLDPPAG SAPGEHVFVK GYEKGQPEE LKPKKKVF EK LQADFKISEE  
 CIAQWKQTNF MTKLGSISCK SLKGGNIS

**[ IDENTIFICATION ]**



**[ IMPORTANT NOTE ]**

The kit is designed for research use only, we will not be responsible for any issue if the kit was used in clinical diagnostic or any other procedures.