

RPG158Mu01 100µg
Recombinant Ubiquitin Like Modifier Activating Enzyme 2 (UBA2)
Organism Species: *Mus musculus* (Mouse)
Instruction manual

FOR RESEARCH USE ONLY
NOT FOR USE IN CLINICAL DIAGNOSTIC PROCEDURES

13th Edition (Revised in Aug, 2023)

[PROPERTIES]

Source: Prokaryotic expression

Host: *E.coli*

Residues: Arg451~Asp638

Tags: N-terminal His Tag

Subcellular Location: Membrane

Purity: > 90%

Traits: Freeze-dried powder

Buffer formulation: PBS, pH7.4, containing 0.01% SKL, 5% Trehalose.

Original Concentration: 200µg/mL

Applications: Positive Control; Immunogen; SDS-PAGE; WB.

(May be suitable for use in other assays to be determined by the end user.)

Predicted isoelectric point: 4.3

Predicted Molecular Mass: 24.2kDa

Accurate Molecular Mass: 32kDa as determined by SDS-PAGE reducing conditions.

Phenomenon explanation:

The possible reasons that the actual band size differs from the predicted are as follows:

1. Splice variants: Alternative splicing may create different sized proteins from the same gene.
2. Relative charge: The composition of amino acids may affect the charge of the protein.
3. Post-translational modification: Phosphorylation, glycosylation, methylation etc.
4. Post-translation cleavage: Many proteins are synthesized as pro-proteins, and then cleaved to give the active form.
5. Polymerization of the target protein: Dimerization, multimerization etc.

[USAGE]

Reconstitute in 10mM PBS (pH7.4) to a concentration of 0.1-1.0 mg/mL. Do not vortex.

[STORAGE AND STABILITY]

Storage: Avoid repeated freeze/thaw cycles.

Store at 2-8°C for one month.

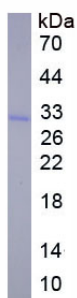
Aliquot and store at -80°C for 12 months.

Stability Test: The thermal stability is described by the loss rate. The loss rate was determined by accelerated thermal degradation test, that is, incubate the protein at 37°C for 48h, and no obvious degradation and precipitation were observed. The loss rate is less than 5% within the expiration date under appropriate storage condition.

[**SEQUENCE**]

```
QFPLTQ NVTVVEGGA ILTCRVDQND  
NTSLQWSNP AQTLYFDDK KALRDNRIEL VRASWHELSE SVSDVLSDE G  
QYTCSLFT MPVKTSKAYL TVLGVPEKPQ ISGFSSPVME GDLMLTCKT SG  
SKPAADI RWFKNKKEIK DVKYLKEEDA NRKTFTVSST LDFRVDRSDD GVA  
VICRVD HESLNATPQV AMQVLEIHYT PSVKIIPSTP FPQEGQPLIL TCES  
KKGKPL PEPVLWTKDG GELPDPDRMV VSGRELNILF LNKTDNNGTYR CEATN  
TIGQ SSAEYVLIHV DVPNTLLPTT IIPSLTTATV TTTVAITTSF TTSATT  
SSI RDPNALAGQN GPDHALIGGI VAVVVFVTLG SIFLLGRYLA RHKGTYL  
TN EAKGAEDAPD ADTAINAEG SQVNAEEKKE YFI
```

[**IDENTIFICATION**]



[**IMPORTANT NOTE**]

The kit is designed for research use only, we will not be responsible for any issue if the kit was used in clinical diagnostic or any other procedures.