

RPB893Mu01 1mg

Recombinant Vascular Endothelial Growth Factor Receptor 3 (VEGFR3)

Organism Species: *Mus musculus* (Mouse)

Instruction manual

FOR RESEARCH USE ONLY

NOT FOR USE IN CLINICAL DIAGNOSTIC PROCEDURES

12th Edition (Revised in Aug, 2016)

[PROPERTIES]

Source: Prokaryotic expression

Host: *E.coli*

Residues: Pro30~Ile326

Tags: N-terminal His Tag

Subcellular Location: Membrane, Nucleus, Cytoplasm, Chromosome

Purity: > 95%

Traits: Freeze-dried powder

Buffer formulation: PBS, pH7.4, containing 0.01% SKL, 5% Trehalose .

Original Concentration: 150µg/mL

Applications: Positive Control; Immunogen; SDS-PAGE; WB.

(May be suitable for use in other assays to be determined by the end user.)

Predicted isoelectric point: 6.0

Predicted Molecular Mass: 37.4kDa

Accurate Molecular Mass: 37kDa as determined by SDS-PAGE reducing conditions.

[USAGE]

Reconstitute in 10mM PBS (pH7.4) to a concentration of 0.1-1.0 mg/mL. Do not vortex.

[STORAGE AND STABILITY]

Storage: Avoid repeated freeze/thaw cycles.

Store at 2-8°C for one month.

Aliquot and store at -80°C for 12 months.

Stability Test: The thermal stability is described by the loss rate. The loss rate was determined by accelerated thermal degradation test, that is, incubate the protein at 37°C for 48h, and no obvious degradation and precipitation were observed. The loss rate is less than 5% within the expiration date under appropriate storage condition.

[SEQUENCE]

```

P TLNITEDSYV IDTGDSLIS
CRGQHLEWT WPGAQEVLT GGDSEDRV VHDCEGTEAR PYCKVLLLAQ
THANNTGSYH CYYKYIKARI EGTTAASTYV FVRDFKHPFI NKPDTLLVNR
KDSMWVPCLV SIPGLNITLR SQSSALHPDG QEVLWDDRRG MRVPTQLLRD
ALYLQCETTW GDQNFLSNLF VVHITGNELY DIQLYPKKSME ELLVGEKLV
NCTVWAEFDS GVTFDWDYPG KQAERAKWVP ERRSQQTHTE LSSILTIHNV
SQNDLGPYVC EANNIGRFR ESTEVI

```

[IDENTIFICATION]

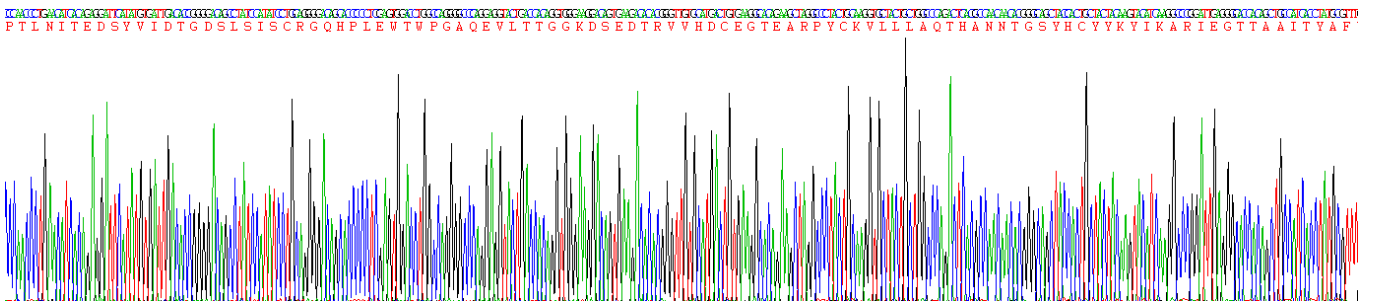
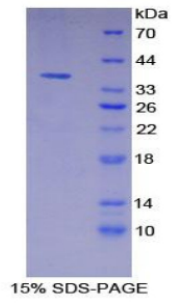


Figure. Gene Sequencing (Extract)



[IMPORTANT NOTE]

The kit is designed for research use only, we will not be responsible for any issue if the kit was used in clinical diagnostic or any other procedures.