

RPA638Ra01 200µg
Recombinant Visfatin (VF)
Organism Species: *Rattus norvegicus* (Rat)
Instruction manual

FOR RESEARCH USE ONLY
NOT FOR USE IN CLINICAL DIAGNOSTIC PROCEDURES

12th Edition (Revised in Aug, 2016)

[PROPERTIES]

Source: Prokaryotic expression

Host: *E.coli*

Residues: Met1~His491

Tags: N-terminal His Tag

Subcellular Location: Nucleus, Secreted, Cytoplasm

Purity: > 95%

Traits: Freeze-dried powder

Buffer formulation: PBS, pH7.4, containing 0.01% SKL, 5% Trehalose.

Original Concentration: 1000µg/mL

Applications: Positive Control; Immunogen; SDS-PAGE; WB.

(May be suitable for use in other assays to be determined by the end user.)

Predicted isoelectric point: 6.7

Predicted Molecular Mass: 56.7kDa

Accurate Molecular Mass: 56kDa as determined by SDS-PAGE reducing conditions.

[USAGE]

Reconstitute in 10mM PBS (pH7.4) to a concentration of 0.1-1.0 mg/mL. Do not vortex.

[STORAGE AND STABILITY]

Storage: Avoid repeated freeze/thaw cycles.

Store at 2-8°C for one month.

Aliquot and store at -80°C for 12 months.

Stability Test: The thermal stability is described by the loss rate. The loss rate was determined by accelerated thermal degradation test, that is, incubate the protein at 37°C for 48h, and no obvious degradation and precipitation were observed. The loss rate is less than 5% within the expiration date under appropriate storage condition.

[SEQUENCE]

```

MNAAAEAEFN ILLATDSYKV THYKQYPPNT SKVYSYFECR EKKTENSKVR
KVKEYEETVFY GLQYILNKYL KGVVVTKEKI QEAKEVYREH FQDDVFNERG
WNYILEKYDG HLPPIEVKAVP EGSVIPRGNV LFTVENTDPE CYWLTNWIET
ILVQSWYPIT VATNSREQK ILAKYLLETS GNLDGLEYKL HDFGYRGVSS
QETAGIGASA HLVNFKGTDV VAGIALIKKY YGTKDPVPGY SVPAAEHSTI
TAWGKDHEKD AFEHIVTQFS SVPVSVVSDS YDIYNACEKI WGEDLRHLIV
SRSTEAPLII RPDSGNPLDT VLKVL DILGK KFPVSENSKG YKLLPPYLRV
IQGDGVDINT LQEIVEGMKQ KKWSIENVSF GSGGALLQKL TRDLLNCSFK
CSYVVTNGLG VNVFKDPVAD PNKRSKKGRL SLHRTAGTF VTLEEGKGD
EEYGHDL LHT VFKNGKVTKS YSFDEVRKNA QLNMEQDVAP H
  
```

[IDENTIFICATION]

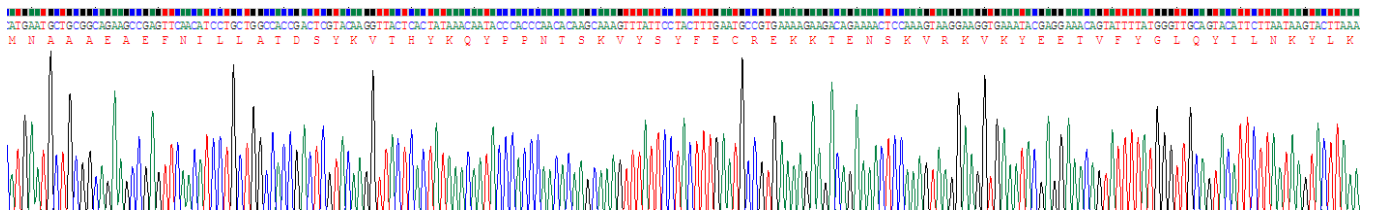


Figure. Gene Sequencing (Extract)

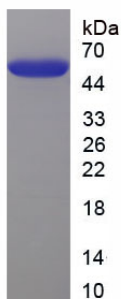


Figure. SDS-PAGE

[IMPORTANT NOTE]

The kit is designed for research use only, we will not be responsible for any issue if the kit was used in clinical diagnostic or any other procedures.