

RPD013Hu01 200µg

Recombinant X-Ray Repair Cross Complementing 5 (XRCC5)

Organism Species: *Homo sapiens (Human)*

Instruction manual

FOR RESEARCH USE ONLY

NOT FOR USE IN CLINICAL DIAGNOSTIC PROCEDURES

13th Edition (Revised in Aug, 2023)

[PROPERTIES]

Source: Prokaryotic expression

Host: *E.coli*

Residues: Val2~Ser460

Tags: N-terminal His Tag

Subcellular Location: Nucleus

Purity: > 90%

Traits: Freeze-dried powder

Buffer formulation: PBS, pH7.4, containing 0.01% SKL, 5% Trehalose .

Original Concentration: 50µg/mL

Applications: Positive Control; Immunogen; SDS-PAGE; WB.

(May be suitable for use in other assays to be determined by the end user.)

Predicted isoelectric point: 5.6

Predicted Molecular Mass: 55.7kDa

Accurate Molecular Mass: 56kDa as determined by SDS-PAGE reducing conditions.

[USAGE]

Reconstitute in ddH₂O to a concentration of 0.1-0.5 mg/mL. Do not vortex.

[STORAGE AND STABILITY]

Storage: Avoid repeated freeze/thaw cycles.

Store at 2-8°C for one month.

Aliquot and store at -80°C for 12 months.

Stability Test: The thermal stability is described by the loss rate. The loss rate was determined by accelerated thermal degradation test, that is, incubate the protein at 37°C for 48h, and no obvious degradation and precipitation were observed. The loss rate is less than 5% within the expiration date under appropriate storage condition.

[SEQUENCE]

```

VRSGNKA AV  VLCMDVGF TM  SNSIPGIE SP  FEQAKKVIT M  FVQRQVFA EN
KDEIALVL FG  TDGTDNPL SG  GDQYQNIT VH  RHLMLPDF DL  LEDIESKI QP
GSQQADFL DA  LIVSMDVI QH  ETIGKKFE KR  HIEIFTDL SS  RFSKSQLD II
IHSLKKCD IS  LQFFLPFS LG  KEDGSGDR GD  GPFRLGGH GP  SFPLKGITE Q
QKEGLEIV KM  VMISLEGE DG  LDEIYSFS ES  LRKLCVFK KI  ERHSIHWP CR
LTIGSNLS IR  IAAYKSIL QE  RVKKTWTV VD  AKTLKKEDI Q  KETVYCLN DD
DETEVLKE DI  IQGFRYGS DI  VPFSKVDE EQ  MKYKSE GKCF  SVLGFCKSS Q
VQRRFFMG NQ  VLKVFAAR DD  EAAVALSSL  IHALDDLDM V  AIVRYAYDK R
ANPQVGVA FP  HIKHNYECL V  YVQLPFMED L  RQYMFSSL KN  SKKYAPTEAQ
LNAVDALIDS
    
```

[IDENTIFICATION]

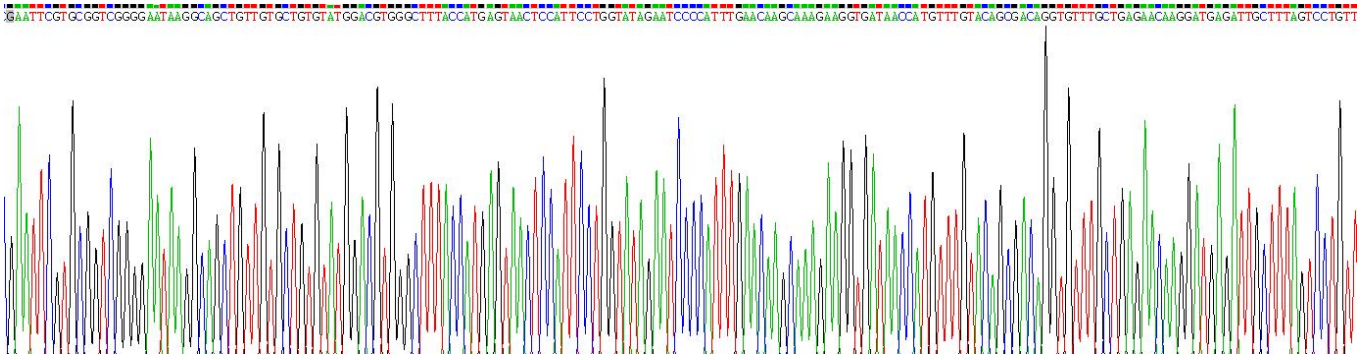


Figure . Gene Sequencing (extract)

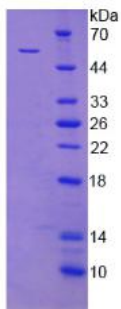


Figure. SDS-PAGE

[IMPORTANT NOTE]

The kit is designed for research use only, we will not be responsible for any issue if the kit was used in clinical diagnostic or any other procedures.