

**RPU935Hu01 100µg**

**Recombinant Zinc Finger Protein 518B (ZNF518B)**

**Organism Species: *Homo sapiens (Human)***

***Instruction manual***

FOR RESEARCH USE ONLY

NOT FOR USE IN CLINICAL DIAGNOSTIC PROCEDURES

---

12th Edition (Revised in Aug, 2016)

## [ **PROPERTIES** ]

**Source:** Prokaryotic expression

**Host:** *E.coli*

**Residues:** Met1~Ala500

**Tags:** N-terminal His Tag

**Subcellular Location:** Nucleus

**Purity:** > 80%

**Traits:** Freeze-dried powder

**Buffer formulation:** 20mM Tris, 150mM NaCl, pH8.0, containing 0.01% SKL, 5% Trehalose.

**Original Concentration:** 200µg/mL

**Applications:** Positive Control; Immunogen; SDS-PAGE; WB.

(May be suitable for use in other assays to be determined by the end user.)

**Predicted isoelectric point:** 9.6

**Predicted Molecular Mass:** 59.6kDa

**Accurate Molecular Mass:** 60kDa as determined by SDS-PAGE reducing conditions.

## [ **USAGE** ]

Reconstitute in 20mM Tris, 150mM NaCl (pH8.0) to a concentration of 0.1-1.0 mg/mL. Do not vortex.

## [ **STORAGE AND STABILITY** ]

**Storage:** Avoid repeated freeze/thaw cycles.

Store at 2-8°C for one month.

Aliquot and store at -80°C for 12 months.

**Stability Test:** The thermal stability is described by the loss rate. The loss rate was determined by accelerated thermal degradation test, that is, incubate the protein at 37°C for 48h, and no obvious degradation and precipitation were observed. The loss rate is less than 5% within the expiration date under appropriate storage condition.

## [ **SEQUENCE** ]

MKDIGQQLYT THLNNGGHNSL TMSPKQPDAN GAPRPNRQEA QTLLYQGSEA  
EAAMMTIATC AKCKSVHKIS LQDLQKGTGK DGMVYCFQCS LGAAPPNFHF  
VSNSSATHV GNKTENFSS VNSKFKVRNF KPGKYYCDKC RFSTKDPLQY  
KKHTLQHEEI KFICSHCSYI SYTKGEFQRH LVKHTGIFPY QCEYCDYGAI  
RNDYIVKHTK RVHERAGAKR PVKAVAKLEP KRTGTSKQNP ELLKASNPT  
TFQNKWSDQL SGFSLHANKD KMHNIMLLPE PKEYQKDVVC IPNKMTLSEP  
NEVNLFENKN VEVEVLSPAK EPVQPGMPLT VVAPAEVVVP ANCLAQLIDV  
KVVNGTQQLV LKLFPLEENN CLEAGRDNNG NSERMVKEKG SNEQEKVLSA  
EKTKSLTVDG NVGKLVGIDS FQPSVQQLK NVKWVRSYDF IMPNSSVHNN  
GKSFINSETI EDFQKKNLY PHRTAFPSVA LKGHSLASVF KNSVLRSLGA

**[ IDENTIFICATION ]**

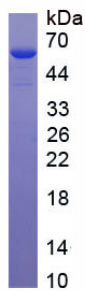


Figure. SDS-PAGE

**[ IMPORTANT NOTE ]**

The kit is designed for research use only, we will not be responsible for any issue if the kit was used in clinical diagnostic or any other procedures.