



SPC506Hu01 100µg
Synthetic Gastrin Releasing Peptide (GRP)
Organism Species: *Homo sapiens* (Human)
Instruction manual

FOR RESEARCH USE ONLY
NOT FOR USE IN CLINICAL DIAGNOSTIC PROCEDURES

12th Edition (Revised in Aug, 2016)

[**PROPERTIES**]

Source: Synthetic Peptide

Residues: Val24-Met50

Purity: >95%

Traits: Freeze-dried powder

Buffer Formulation: 10mM PBS, pH7.4.

Predicted isoelectric point: 10.0

Predicted Molecular Mass: 2860.4Da

Applications: Immunogen; Blocking Peptide.

[**USAGE**]

Reconstitute in 10mM PBS (pH7.4) to a concentration of 0.1-1.0 mg/mL. Do not vortex.

[**STORAGE AND STABILITY**]

Storage: Avoid repeated freeze/thaw cycles.

Store at 2-8°C for one month.

Aliquot and store at -80°C for 12 months.

Stability Test: The thermal stability is described by the loss rate. The loss rate was determined by accelerated thermal degradation test, that is, incubate the protein at 37°C for 48h, and no obvious degradation and precipitation were observed. The loss rate is less than 5% within the expiration date under appropriate storage condition.

[**SEQUENCE**]

VPLPAGG GTVLTKMYPR GNHWAVGHLM-NH2

[IDENTIFICATION]

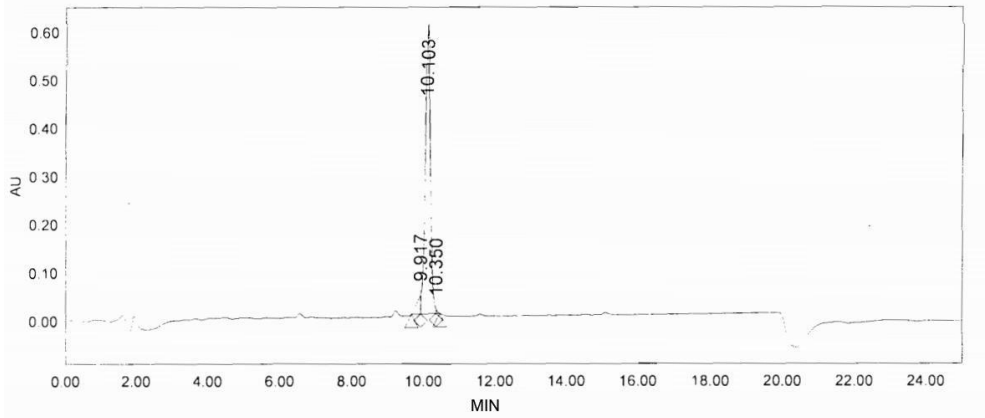


Figure 1. HPLC

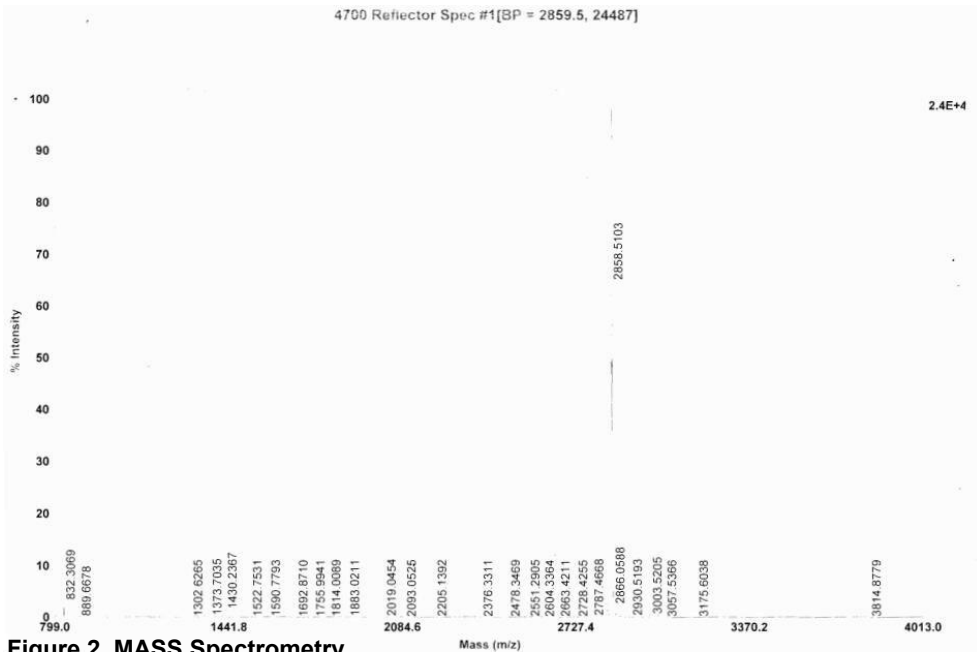


Figure 2. MASS Spectrometry

[IMPORTANT NOTE]

The kit is designed for in vitro and research use only, we will not be responsible for any issue if the kit was used in clinical diagnostic or any other procedures.